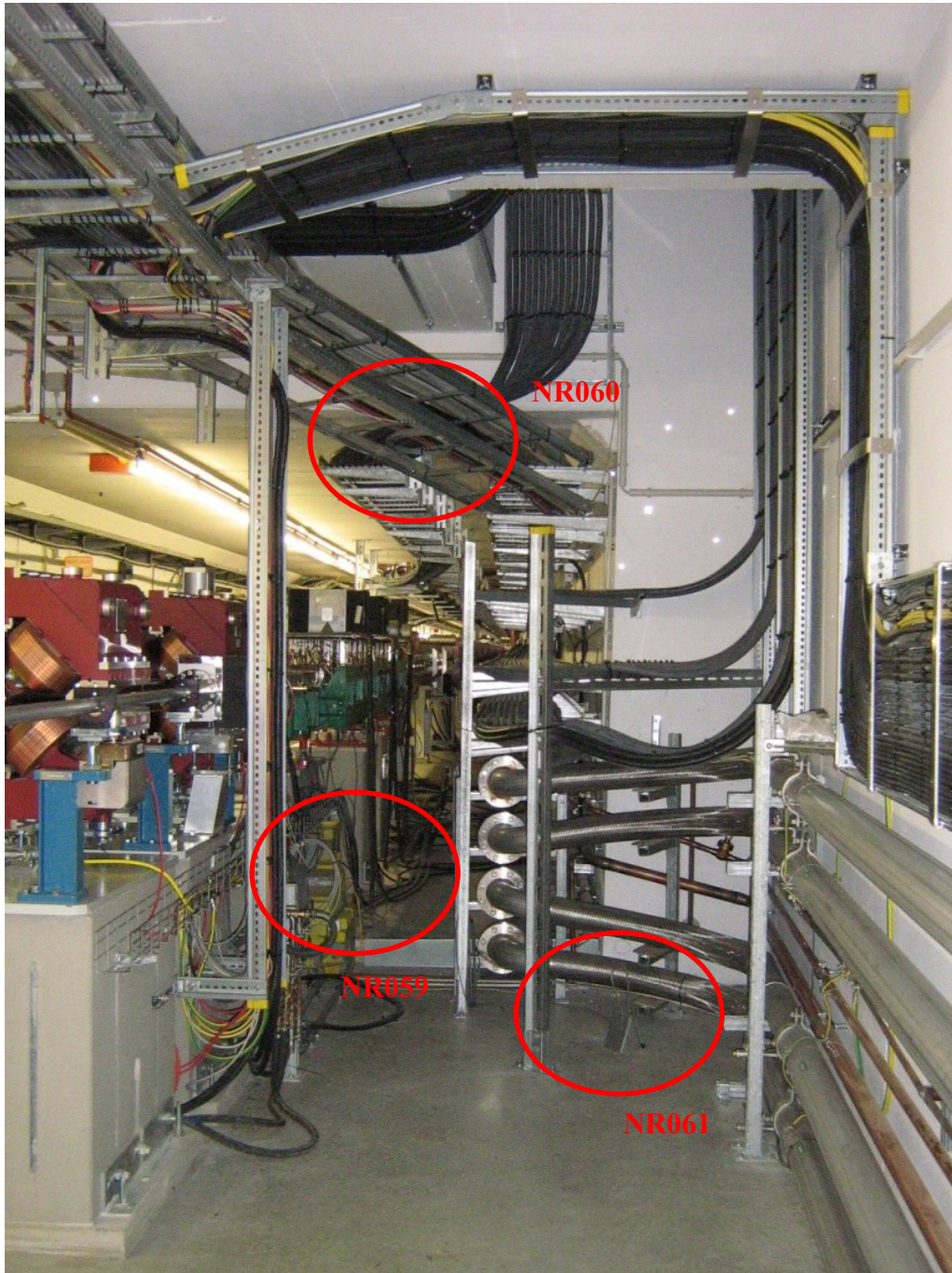


Aufbau einiger PT100-Fühler für PETRA3 Tunnelbewegung



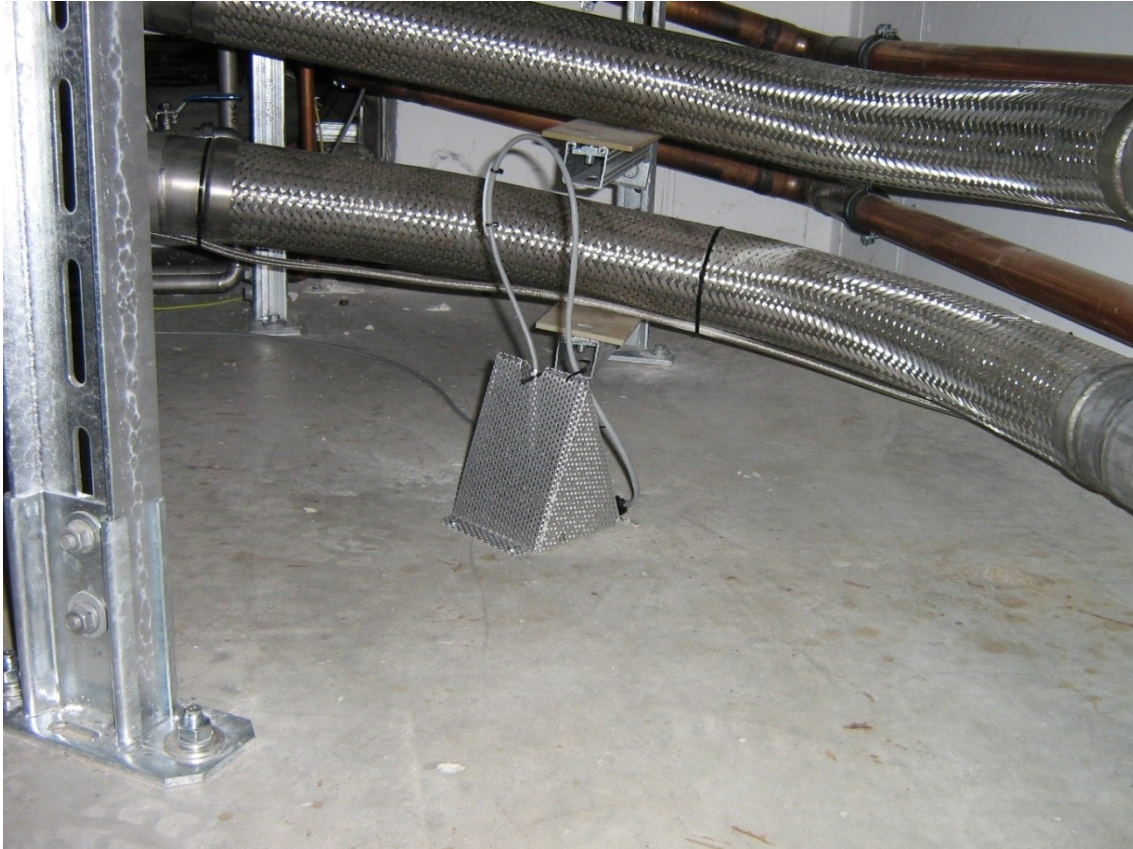
NR059 bis NR061



NR059 Bodentemperatur



NR060 Lufttemperatur



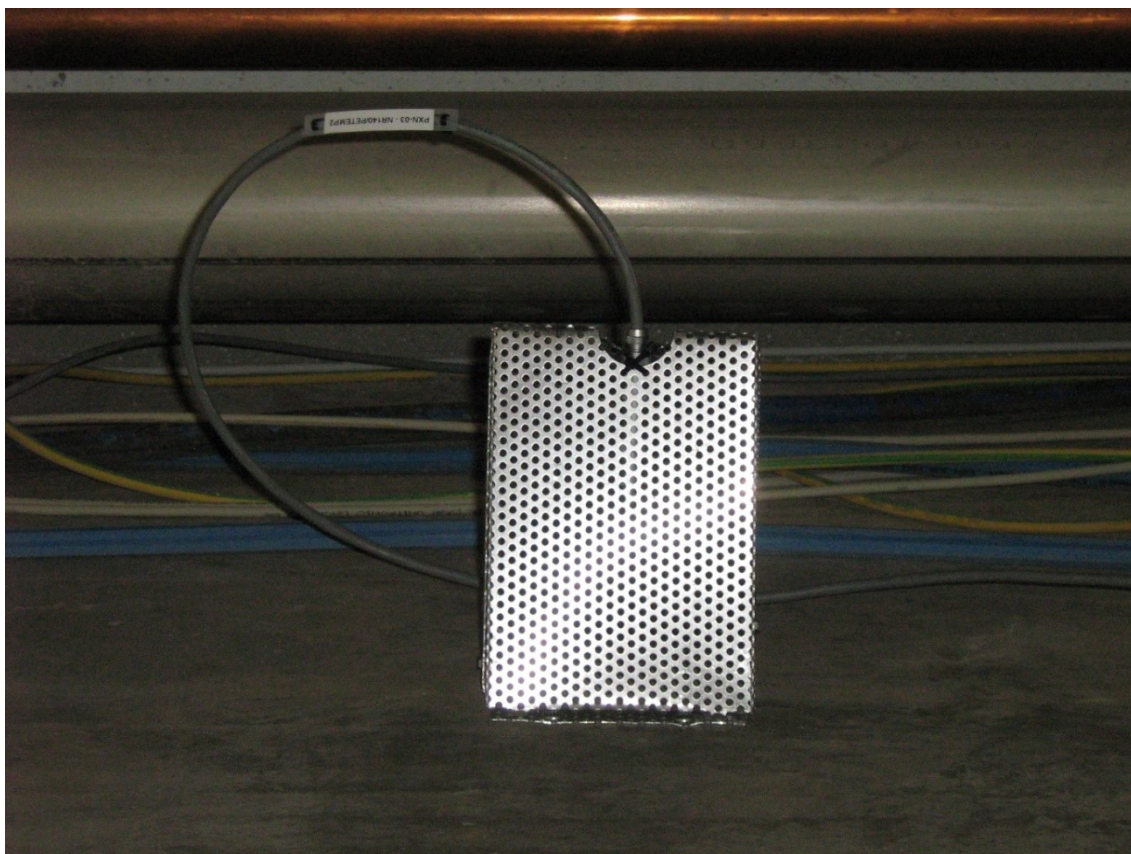
NR061 Bodentemperatur



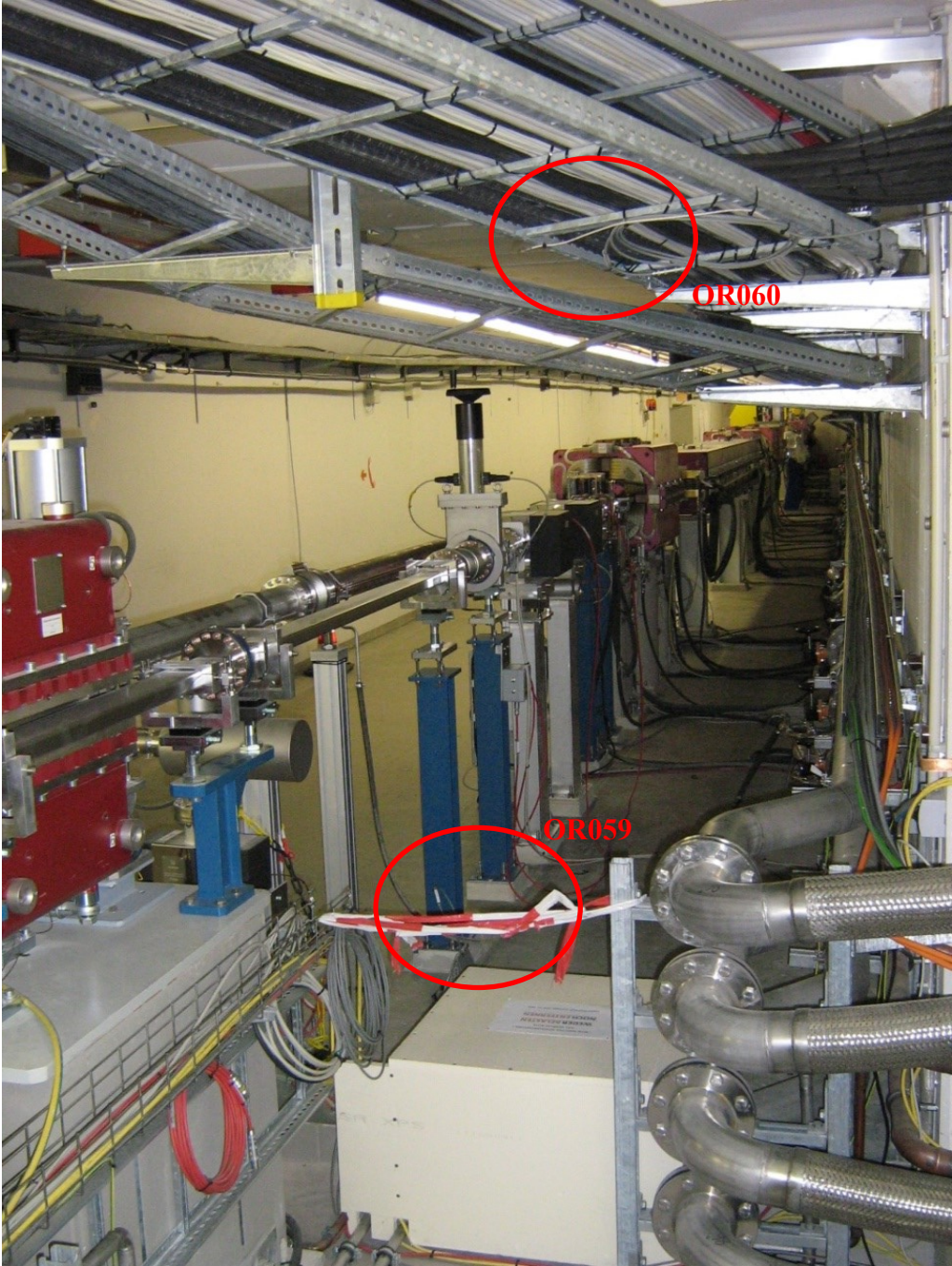
NR139 Bodentemperatur



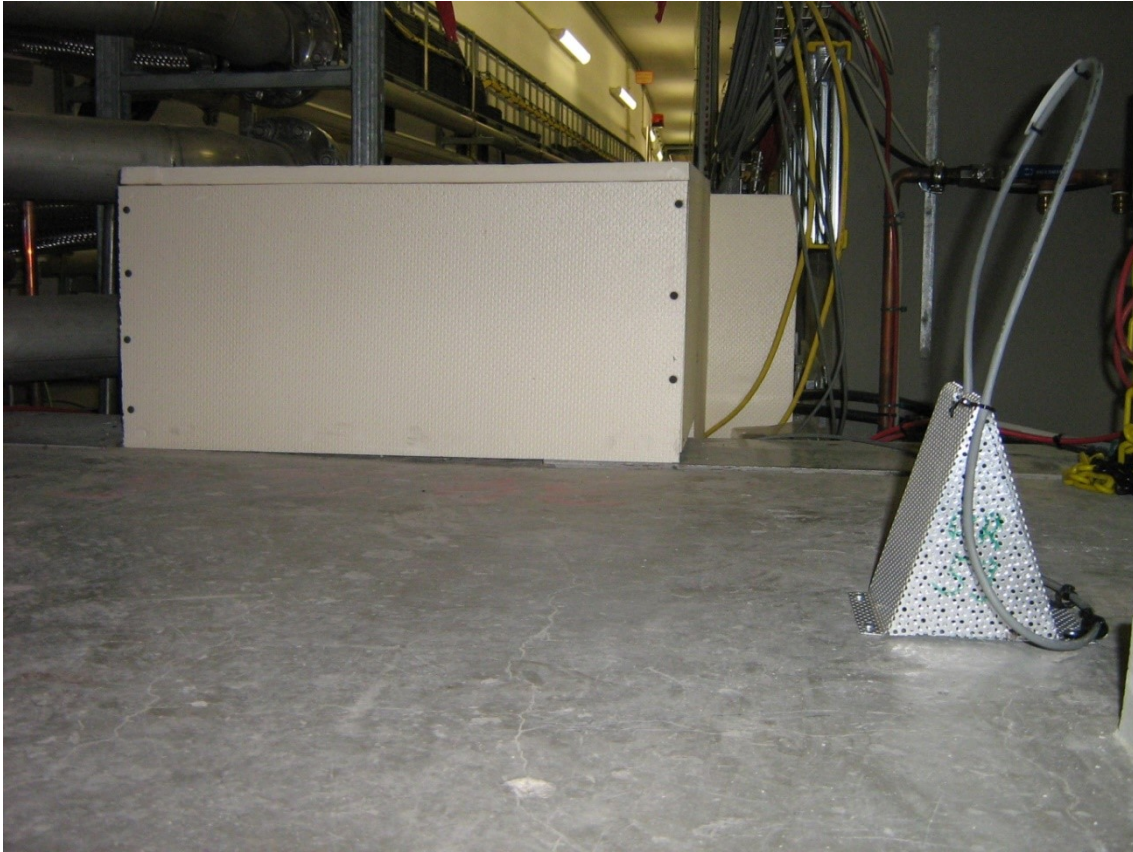
NR140 Lufttemperatur



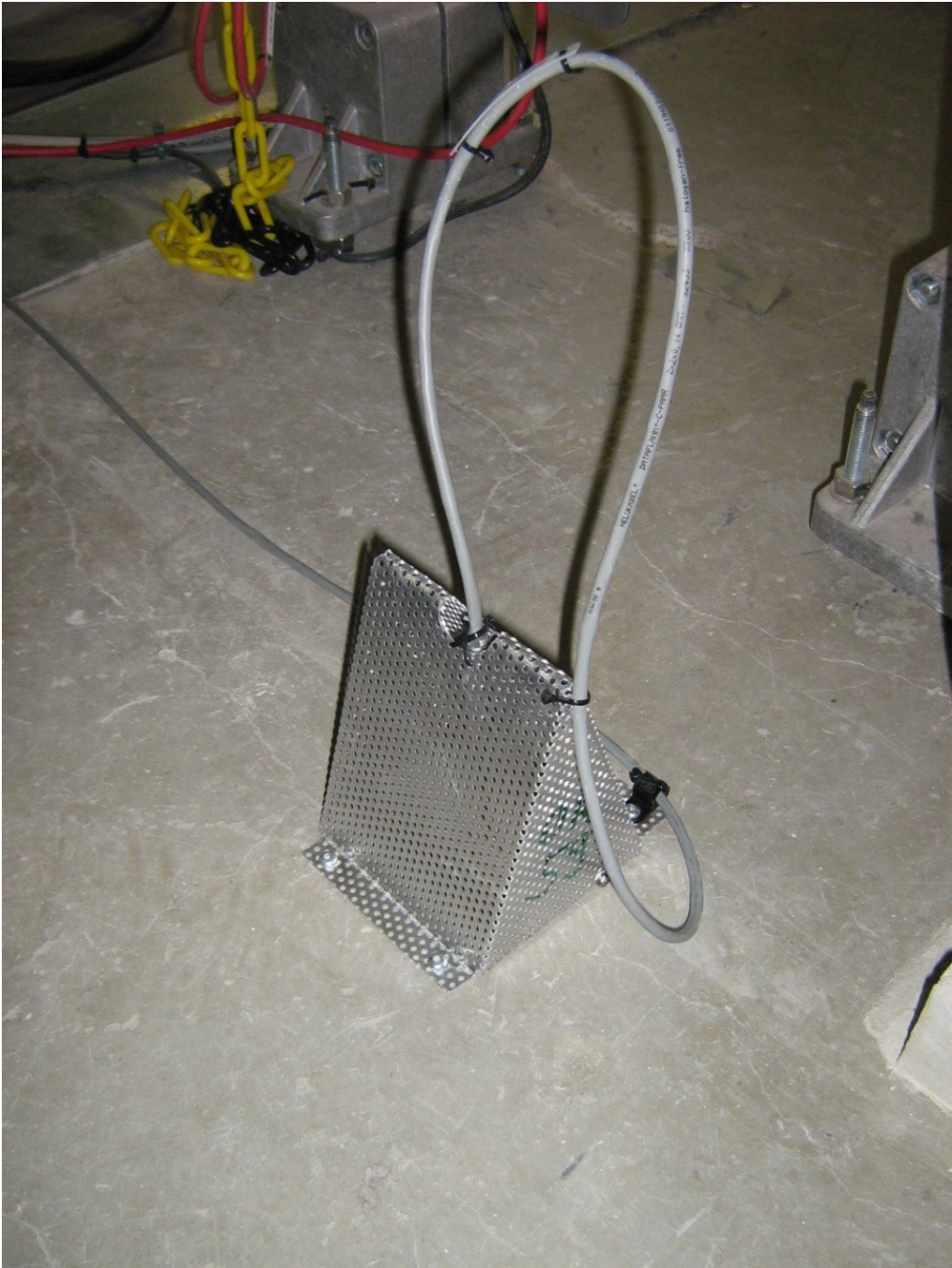
NR144 Bodentemperatur



OR059 bis OR060



OR059 Bodentemperatur



OR059 Bodentemperatur



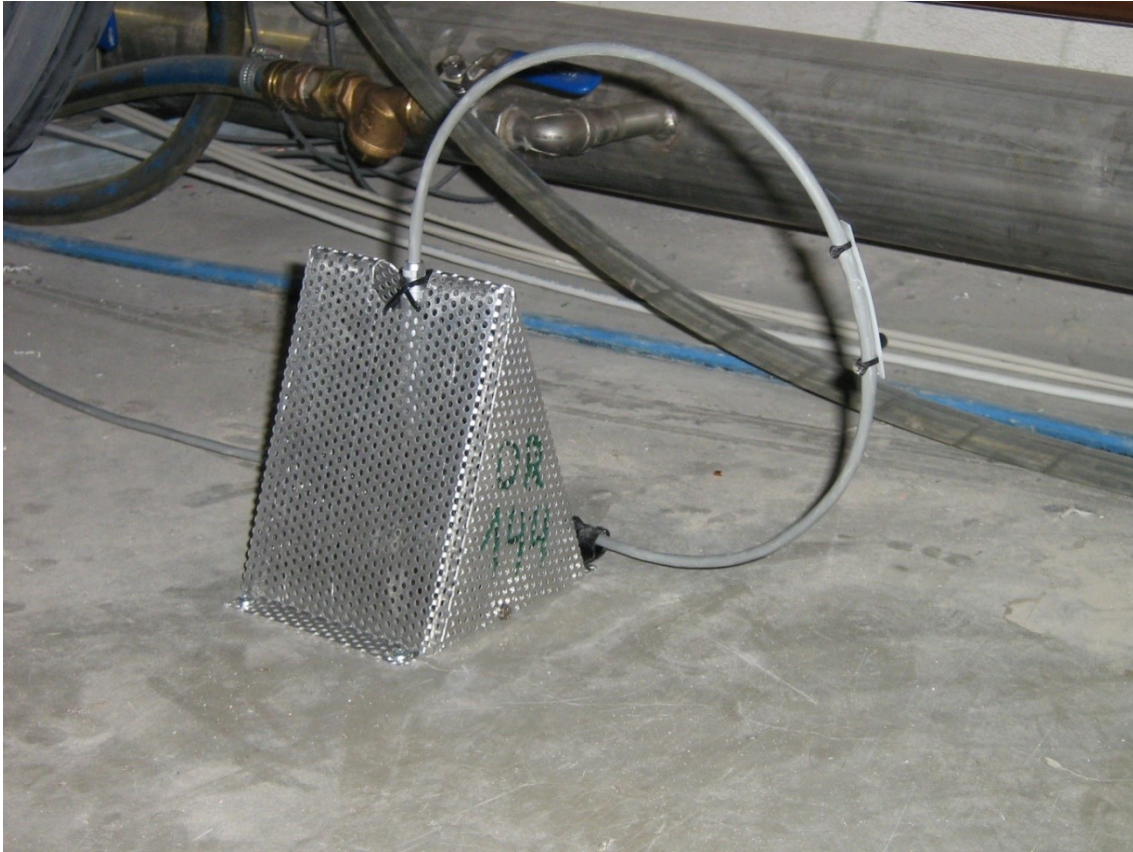
OR060 Lufttemperatur



OR136 Bodentemperatur



OR140 Lufttemperatur



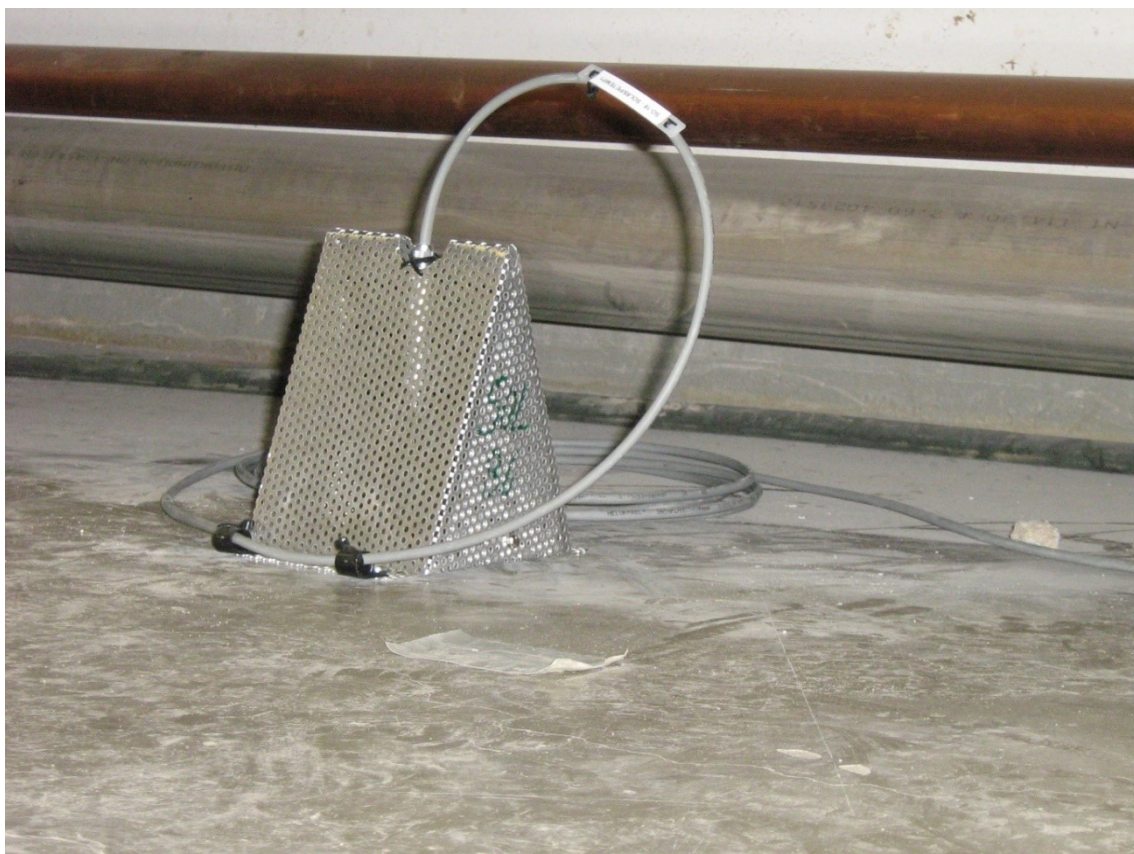
OR144 Bodentemperatur



SOR085 bis SOR085



SOR085 Lufttemperatur



SOR087 Bodentemperatur